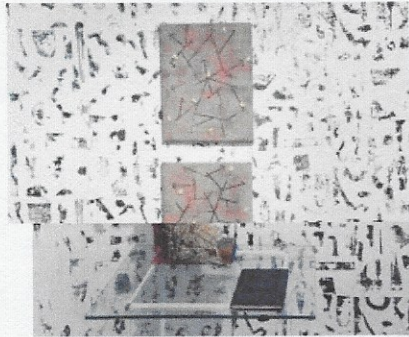
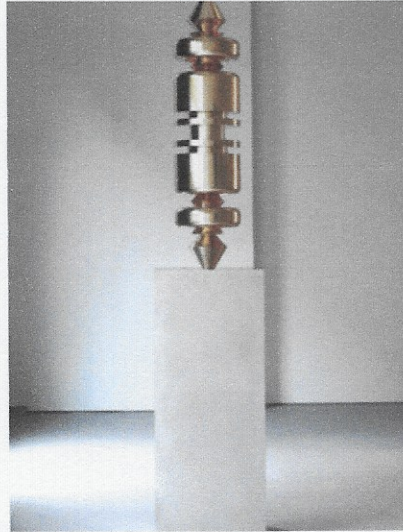


ART

ARMCHAIR TRAVELER: SPACE BETWEEN

By THE ARMCHAIR TRAVELER

f LIKE 8 t TWEET 7 c COMMENTS



LAUNCH GALLERY >

< SHARE + ADD TO MY LIBRARY PRINT

The art world too global for you? Each week, *Interview* highlights in pictures the shows you'd want to see—if you could jetset from one international hub to the next.

Kendell Geers, *Monument to the F-Word*, 2010, polished bronze, 118.5 x 25 x 25cm. Courtesy of the artist and of Stephen Friedman Gallery. On view through November 5, 2014 as part of "Paradigm Stores," which fills up an unused office building in London.

Chung Sang-hwa, *Untitled 73-11*, 1973. On view at Blum & Poe in Los Angeles through November 8.

Lucky DeBellevue, *Open Concept* (installation view), 2014, mixed media. On view through October 18, 2014 at Kai Matsumiya Gallery, New York.

Felice Varini, *Square with Four Circles*, 2010. On view indefinitely at Temple Plaza in New Haven, Connecticut.